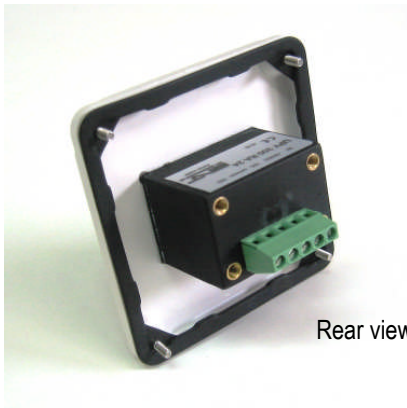
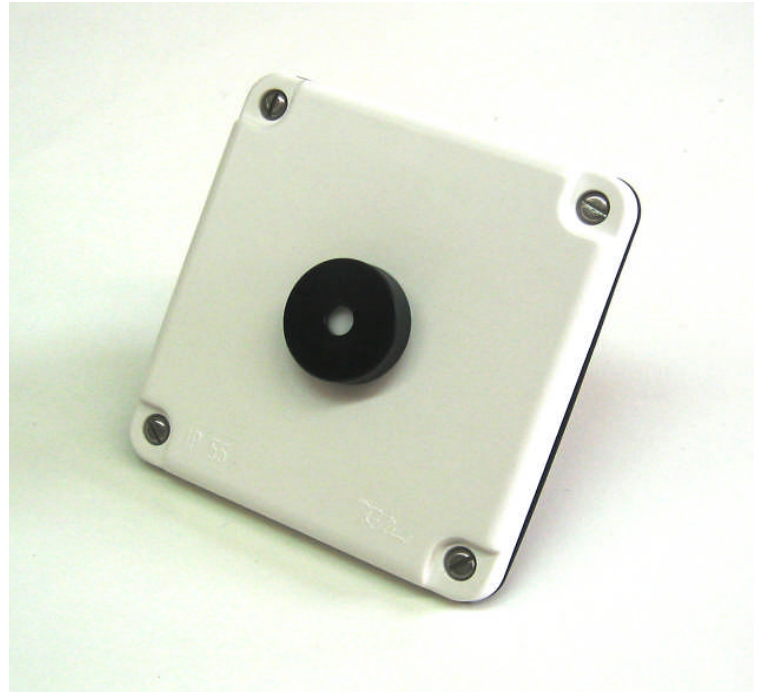


## Non-contact ultrasonic switch for door automation UPY Series

- Built-in the cover of electric switch box (surface mount or wall mount)
- For use where contact by hand is not allowed (e.g. food processing, clean rooms, hospitals)
- Works under dirt, dust, fog, bright light
- Switches independently of material, surface, colour and size of target
- Water tight, protection class IP 67, robust
- Reach 30cm (independent of target!)
- With relay output for connection of a door control unit
- 24VDC operation
- Customized versions available!
- Swiss made



Rear view

### Technical data

Detection range	mm	300
Operating frequency	kHz	180
Switch output	-	Relay (1 change switch N/O, N/C)
t <sub>on</sub> Relay	s	~0.1
t <sub>off</sub> Relay	s	~3
Switch voltage relay	VAC/DC	max. 30
Switch current relay	A	max. 6
Power supply voltage (reversal polarity protection)	VDC	12...26
Mean consumption	mA	~60
Ambient temperature	°C	-20...+50
Protection class sensor	-	IP67
Electrical connection	-	screw-terminal
Standard box cover	-	blind cover wet range, Feller Switzerland, white

### UPY 300 RA 24

## Description

The ultrasonic switch UPY 300 RA 24 is used instead of a conventional electric wall mounted switch when a non contact operation is necessary (e.g. sliding doors, lights etc.). This complies with certain hygienic demands (food processing industry, hospitals, clean rooms).

The advantage of ultrasonic sensors compared to optical switches is that they are least susceptible to dirt and fully water resistant. The sensor diaphragm is protected against mechanical wear by an orifice. The orifice can be dismounted for cleaning purpose. The sensor reacts only to presence and not to movements. As soon as an object (e.g. a hand) is within the 30cm detection zone, the built-in relay switches. Since the sensor does sense the time of flight and not an intensity (as usual with optical sensors), it has a 100% background suppression. Loads of up to 30VAC/DC and 6A can be switched with the mono stable relay.

The UPY switch is built-in in our works into a cover for either wall or surface mount. The precise cover type has to be defined in the order. Or covers can be sent with the order for further processing.

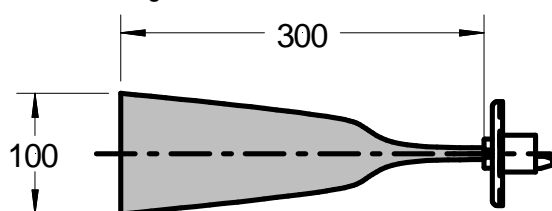
## Electrical connection

A 4 or 5 wire cable can be connected to the sensors screw terminal. Connection (from left to right, see also type label):

- 0V (sensor power supply)
- +24VDC (sensor power supply)
- NC relay out (max. 30V!)
- Common relay contact (max. 30V!)
- NO relay out (max. 30V!)

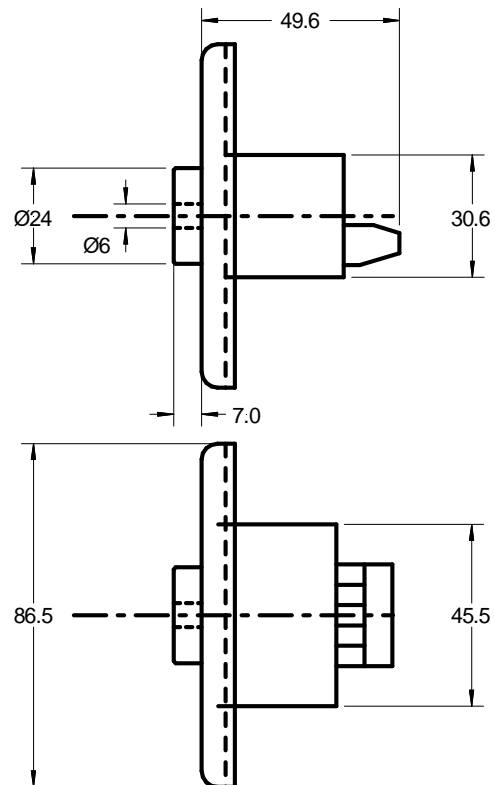
The relay works as a pulse switch. It switches as long as an object is within the detection range. After that it switches back to its original status after a time delay of approx. 3s. With the relay pulse a control unit can be operated.

## Detection range



The detection range can be set shorter or longer on customer demand.

## Dimensions



## Mounting

The UPY switch is offered as a unit together with the box cover (incl. sealing and 4 M3 screws). Usual box covers fit to surface or wall housings as well. The shown setup is Swiss standard. However the UPY sensor can be built in any other box covers.



surface mount



wall mount

Ultrasonic sensors can mutually influence themselves when they look at each other. They are supposed to be mounted therefore not fully opposite to each other. If not possible, the following rule must be followed:

- mutual distance min. 3m
- or mounted min. 30cm out of axis